

FT-FAT SYSTEMS and FEATURES that meet your needs and budget.

Our **Fully Automatic Timing** systems combined with our easy-to-use software, allow you to host a quality track meet with **accurate times** and **fast results**.



Fully Automatic Timing or FAT is a timing system in which the clock is automatically activated by the starting device, and the finish time is determined by analysis of a photo finish. FlashTiming offers three different FAT systems to suit your needs and budget: FT-FAT LS Plus, FT-FAT200, and FT-FAT90.

Our innovative radio-linked systems and easy-to-use software:

Coordinate readiness between the starter and timer officials

Capture and save time-encoded video of the finish line

Review the captured video

Record the athletes' times

Transfer results to your meet management application

Our FT-FAT systems include:

A weatherproof digital video camera, starter radio unit, USB linked timer radio unit, 1Gbps POE/Switch and software. Our systems come with 25Ft of Shielded Cat6 Ethernet cable and two 5ft cables to connect your computers and power the camera. Additional Ethernet cabling is available.

Easy to use

Our software is intuitive and takes little training. Finding help to run your meet is a hassle, but with **FlashTiming**, volunteers can come up to speed on how to use the system within minutes.

Compatible with a variety of scoring packages

FlashTiming makes it easy to transfer times into your meet management application. By networking your computers, data exchange between **FlashTiming** and your meet management application is seamless. **FlashTiming** interfaces with most scoring packages including Hy-Tek's Meet Manager, Athletic.net's Run Meet, MeetPro, Easy Meet Manager and many more.



Wireless Starter Unit

Our **FT-FAT** systems are radio-linked, so there's no need to wire the starter. Our systems provide two-way radio communication between the starting official and the timing official, ensuring everyone is ready to capture each race.

Accurate times

Our wireless starter unit has a precise crystal-controlled clock. It captures the start instance with a high degree of accuracy and our synchronization method accounts for any radio transmission delays.

Optional support for electronic guns

FT-FAT is reliably triggered by a .22 or .32 caliber starting pistol, or optionally, an electronic gun. The starter unit can optionally be configured to interface with most electronic starting guns, including Gill, VS Athletics and CEI E-guns.

Upgradeable

Our new line of **FT-FAT** systems are based on the same architecture and are upgradeable to a higher model.



Protecting your investment is standard

Our water-resistant custom aluminum camera enclosure and **hard-shell carrying case** safeguards your system. The camera is enclosed in a weather resistant housing, which is machined from a solid block of aluminum and is well sealed to resist inclement weather. All backed by our 3-year warranty!

Free customer support

We pride ourselves on premium customer service and satisfaction. Knowledgeable team members are available to assist you everyday, 7AM-11PM, Pacific Time.

Package Deals available

Purchase any **FT-FAT** system with our Camera Stand, Starter Stand and/or **FT-Display** and receive a package discount.

MINIMUM SYSTEM REQUIREMENTS:

- CPU with benchmark value of 5000 or greater (3500 or greater for the FT-FAT90)*
- 8GB of Ram
- 200GB Hard Drive
- 1366 x 768 Screen Resolution (1980 x 1080 recommended)
- USB 2.0
- 1GB Ethernet Port or 1 Gbps Ethernet adapter
- Windows 10 or later, 64bit OS

** Performance may vary depending on CPU variables.*

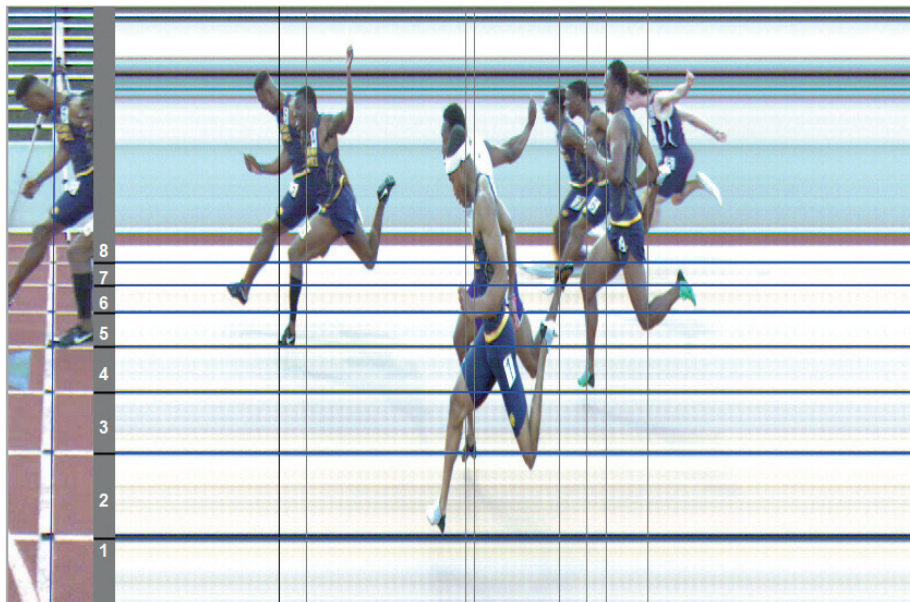
Go to www.cpubenchmark.net/cpu_list.php to determine your CPU's capability. Find your CPU Name by typing in "About your CPU" in the Windows search box. Frame rates are adjustable to accommodate slower processors.

FT-FAT LS Plus *Fully Automatic Timing System*

Simultaneous Area View and Line Scan View.

Area scan and line scan from the same camera, at the same time.

FlashTiming's line scan camera and software allow you to quickly determine a precise finishing time for the athlete. Our unique video window helps with close races and determining lanes.



The line scan window shows a composite image created from the high speed video frames of the athletes crossing the finish line, making it easier to see when athletes cross the line.

Timing an athlete is as fast as clicking on the line where the athlete first crosses the finish line. The video frame (left) tracks the line scan cursor, showing the activity ahead and behind the finish line.

Review the race while capturing

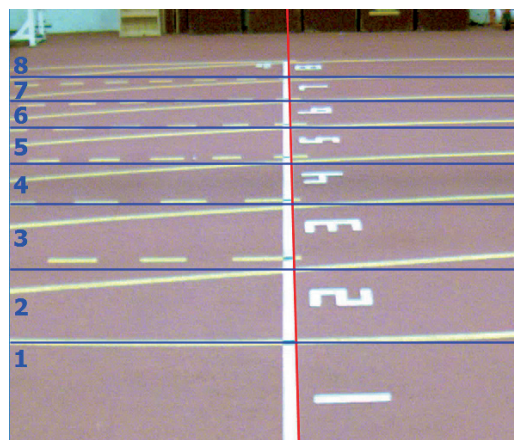
No need to wait until the end of the race to review the video and determine the results. Our **FT-FAT LS Plus** allows you to review the line scan image of the current race while you are capturing the video. The race can be scored as soon as the last runner crosses the finish line.

Easy to set up

No need to break out the laser levels and plumb bobs when placing the camera at the finish line. The camera does not need to be perfectly vertical – *just place and go!* Software compensates for slight misalignments greatly reducing the time required to physically place the camera on the finish line.

Full frame video

FT-FAT LS Plus offers two solutions in one. Use the system as either a line scan or full-frame video camera. **FT-FAT LS Plus** can be configured to run as a video camera with frame rates up to 200FPS. Pick the setup that is best for your needs.



The finish line does not need to be perfectly vertical in the camera view.

FT-FAT200 and FT-FAT90

FT-FAT200 Fully Automatic Timing System is a digital-based timing system with fast frame rate and high resolution.

The **FT-FAT200** is a video-based system with frame rates up to 200FPS (one frame every 0.005 second). At 200FPS, a typical sprinter moves less than the width of the finish line between video frames. The video camera has a resolution of 600x800 for a sharp image and increased visibility of hip numbers. The **FT-FAT200** exceeds NCAA FAT requirements and can be upgraded to our **FT-FATLS Plus**.

FT-FAT90 Fully Automatic Timing System is our entry-level system at 90 frames per second.

The **FT-FAT90** is a video-based system with all the same features of our **FT-FAT200** system at a reduced frame rate and price. It's ideal for schools that want FAT but are on a tight budget. What's more, organizations can upgrade to the **FT-FAT200** or **FT-FAT LS Plus** at a later date!

FT-FAT Capture Screen

The user can communicate with the starter to determine when both officials are ready to start the race.

Display of encoded race time.

Bookmarks allow you to mark runners at the finish line and to quickly locate the finishers when reviewing the video.

Use the built-in Stopwatch for a backup hand time, which can be used to calibrate the video.

The list of events created in your meet management application is displayed so the capture official knows the schedule and which race is next.

Event	Rnd	Heat	Description
001	1	1	Girls 100 Meter Hurdles
002	1	1	Boys 110 Meter Hurdles
002	1	2	Boys 110 Meter Hurdles
002	1	3	Boys 110 Meter Hurdles
002	1	4	Boys 110 Meter Hurdles
002	1	5	Boys 110 Meter Hurdles
002	1	6	Boys 110 Meter Hurdles
003	1	1	Girls 3000 Meter Run
003	1	2	Girls 3000 Meter Run
004	1	1	Boys 3000 Meter Run
004	1	2	Boys 3000 Meter Run
005	1	1	Girls 100 Meter Dash
005	1	2	Girls 100 Meter Dash
005	1	3	Girls 100 Meter Dash
005	1	4	Girls 100 Meter Dash
005	1	5	Girls 100 Meter Dash
005	1	6	Girls 100 Meter Dash
006	1	1	Boys 100 Meter Dash
006	1	2	Boys 100 Meter Dash
006	1	3	Boys 100 Meter Dash
006	1	4	Boys 100 Meter Dash

Review saved videos while capturing: our software lets you capture and record video while reviewing saved videos from previous races. You can review the video on the same computer used for capturing or on a second networked computer.

FT-FAT Review Screen

Seeded race participants and lane assignments are displayed when reviewing video and determining times.

Race results are saved for easy import into your meet management application.

Lane	Time	ID #	Name	School
1	00:10.733	5777	Needham, Sp	WESIM
2		4577	Needham David	SEUS
3	00:10.653	726	Link, Jeremy	CANB
4	00:10.403	1323	Sciotino, Taryn	EVGN
5		876	Faitham, Gunnar	CCAT
6	00:10.668	2287	Kamthammettu, JHS	
7		2800	Watkins, Brennan	LKRG
8		2269	Hartmeier, Nathan	JHS

Playback and review of captured results are easy. Position the runner on the finish line and click on the runner's lane or name in the table. After all the athletes' times are recorded, transfer the results to your meet management application with a click of a mouse.